

Assembly instructions: RHM Wooden Crate Display Stand

(You will require 2 Phillips screwdrivers) **Components included:**

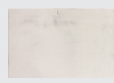
Crates



8x long
crate panels



8x short
crate panels



4x crate
base



16x metal
dowels

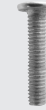
Unit



22x female
inter screws



16x short
crate screws



6x long
leg screws



1x
header



2x base
feet

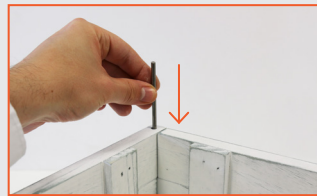
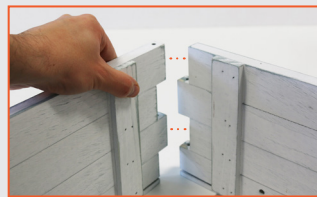


2x leg
supports

How to assemble

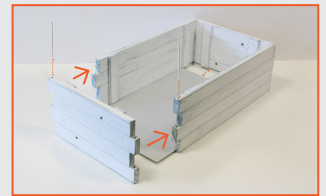
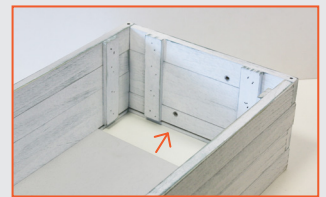
1.

Take 1 long and 1 short crate sides and slot them together. Insert one of the long metal dowels into the corner hole. Slot another long crate side onto the short side of this, and insert another metal dowel into the new corner.



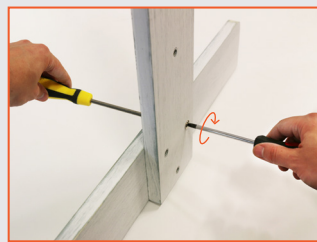
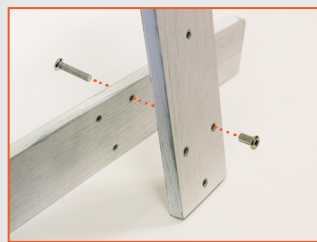
2.

Take one of your crate bases and slot into your three-sided construction. Then, take the final short side of the crate and slot this in to complete your crate, adding another metal dowel into each of the new corners. Repeat this process to construct all four of your crates.



3.

With the rounded corners facing upward, fix the base feet to the bottom of the support legs (on the same side that the header channels are affixed to) by aligning the x3 holes, insert a female inter screw via the outer side of the support legs and then connecting with the longer male screws via the inside of the base feet and tighten with two screwdrivers, repeat for the remaining holes and other support leg.

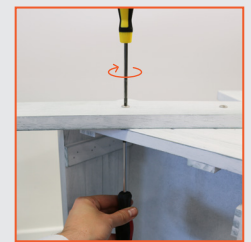


4.

Lay the 4 crates on their sides and lay one of the constructed legs on top, (the header channel and base feet should be facing downwards). ensuring the crates are orientated correctly with the openings facing upwards towards the header channel of the leg.



Thread a female inter screw downwards through the leg and into the crate, then thread a short screw underneath through the crate and into the female screw and tighten with two screwdrivers. Repeat this step for the remaining hole and 3 crates.



5.

Carefully flip the partially-constructed unit over and repeat step 4 to connect the remaining leg assembly to the other side of the crates.



6.

Attach the header to the display stand by sliding it into the header channels from above.

