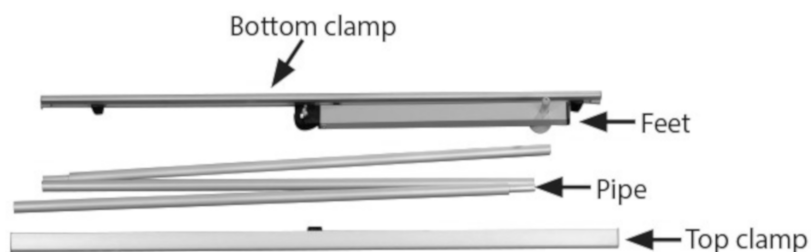
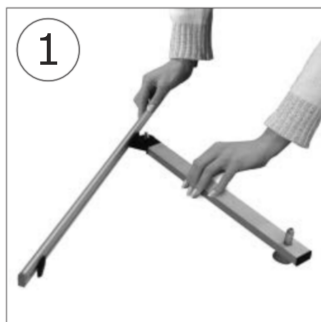
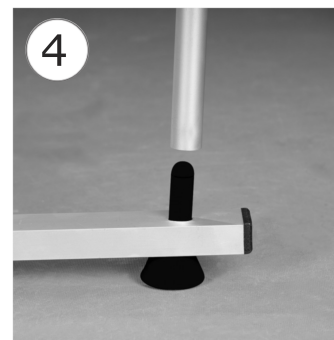
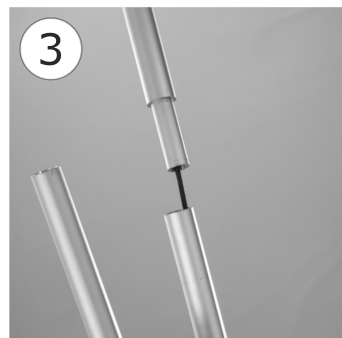
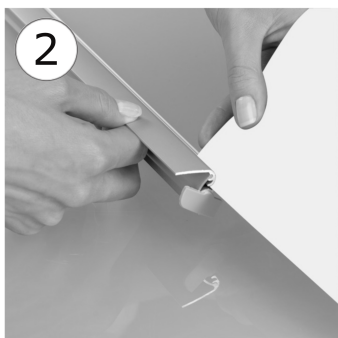


# Assembly Instructions : **Quick Banner Stand EQS**



Form the base into a "T" shape and fix in position by turning the plastic connector.



Open the top clamp profile and place in the banner. Repeat with the bottom clamp and other end of the banner.

Complete the assembly of the three-part pipe.

Place the assembled pipe into the base hole.



Connect the other end of the pipe to the back connector in the top clamp.

Your banner is now assembled!

